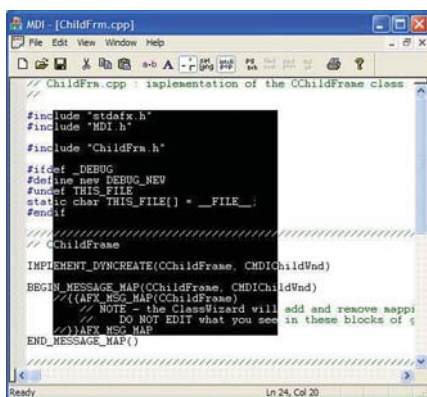


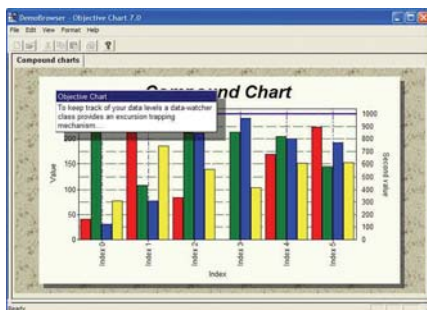
ROGUE WAVE SOFTWARE STINGRAY® PRODUCTS



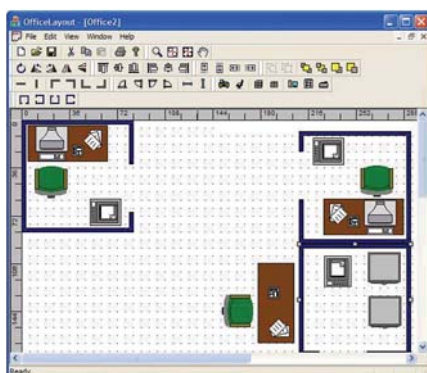
OBJECTIVE TOOLKIT® provides a library of controls and utilities for enhancing the graphical user interface of custom applications. Objective Toolkit offers a wide variety of powerful MFC and ActiveX components such as color well, tab control, calendar, currency and calculator. The diversity of components in Objective Toolkit makes it easy to customize and enhance your GUI applications.



OBJECTIVE EDIT offers an advanced text editor component useful for implementing an interactive environment, similar to the Microsoft® Visual C++® editor, for viewing and editing source code, scripts and mark-up languages including C++, _JavaScript, _VBScript and HTML.



OBJECTIVE CHART delivers high-performance, advanced charting capabilities, including a variety of two-dimensional chart types.



OBJECTIVE VIEWS provides components for building drag-and-drop graphical interfaces that are Visio-like in functionality and for incorporating custom graphical objects and enhanced drawing capabilities.

Develop Effective GUIs for Custom Applications | Download Free Stingray Demo Browsers at www.roguewave.com/developer/downloads

*Objective Toolkit and Objective Grid are also sold as separate products.

ROGUE WAVE SOFTWARE STINGRAY® PRODUCTS

STINGRAY COMPONENTS	FEATURES	BENEFITS
Objective Grid (MFC, ActiveX, Microsoft, .NET)	Consistent APIs across Microsoft® Technologies	<ul style="list-style-type: none"> • Eases the migration of MFC and ActiveX applications to Microsoft .NET • Reduces the learning curve for developers moving to Microsoft .NET
	Styles can be applied to cells, or changes of cells, to change the appearance or formatting of the data	<ul style="list-style-type: none"> • Offers a way to create uniform, consistent GUI applications • Robust and extensible library of components with a similar architecture, shortening the learning curve
	Any Microsoft .NET control can be used as a grid cell editor	<ul style="list-style-type: none"> • Operates in a “virtual” mode • Allows data to be obtained from data sources separate from the grid
	Can be used as a browser to combine with a database with ODBC, DAO, and ADO connections	<ul style="list-style-type: none"> • Quickly and easily create GUI applications that access data from different database vendors
	Contains tree-grid functionality for creating hierarchal grids	<ul style="list-style-type: none"> • Easily create GUI applications that organize
Objective Toolkit (MFC and ActiveX)	Docking window architecture generates applications with a modern look-and-feel	<ul style="list-style-type: none"> • Reconfigure user interface and MDI layout as needed <ul style="list-style-type: none"> - Windows XP or Office 2003 look and feel (MFC) - Autohiding of docking windows similar to Visual Studio IDE (MFC) • Powerful drag-and-drop integration for easy implementation in the Visual Basic environment
	Tree control with enhanced functionality provides support for multiple selection, bitmaps and check boxes, and fully extensible integrated grids	<ul style="list-style-type: none"> • Quickly organize and present hierarchical data graphically • Easily create a clear, user-friendly interface
	Shortcut Bar closely mimics the Microsoft Outlook Bar, and it can be easily embedded in a docking window or in a pane area of a splitter	<ul style="list-style-type: none"> • Build Outlook®-like applications • Reduce the clutter of GUI interfaces
Objective Edit (MFC)	Offers the ability to implement an advanced text editor component for source code editing and viewing, similar to the Microsoft® Visual C++® editor	<ul style="list-style-type: none"> • Avoid the low-level details of implementing an IDE environment • Fully customizable • Consistent with Microsoft look and feel, making it easy to manipulate
Objective Chart (MFC)	Implements over thirty graph types and supports legends, titles and labels	<ul style="list-style-type: none"> • Provides a large variety of built-in graph components, offering quick implementation • Creates charting applications with robust and powerful graphic ability, including Curve Fit Chart capabilities
Objective Views (MFC)	Offers a canvas to draw and manipulate symbols and graphics, which can be exported as a Windows enhanced metafile	<ul style="list-style-type: none"> • Shortens the learning curve by providing an easy-to-use canvas
	Can be used to implement a modeling tool such as Microsoft Visio®	<ul style="list-style-type: none"> • Pre-built designer component lets you generate and customize symbols for the canvas, saving time and freeing you from low-level details



USA 1-800-487-3217 USA 1-303-473-9118 FRANCE +33 (0)1 30 09 78 78 GERMANY +49 (0)6103 59340 UK +44 (0)118 9360710
www.roguewave.com

Rogue Wave Software maintains local offices worldwide. For additional contact information, visit: <http://www.roguewave.com/contact/>

©1995-2006 Copyright Quovadx, Inc. All Rights Reserved. The Rogue Wave name and logo and Stingray are registered trademarks of Quovadx, Inc. in the United States and other countries. All other trademarks are the property of their respective owners.