

# Testing done right



Make a sustainable impact to software quality with Microsoft Visual Studio Test Professional 2010, the integrated testing toolset that delivers a complete plan-test-track workflow. File high quality bugs with rich diagnostics for your developers. Take full advantage of a task-driven user interface and features like Fast Forward for Manual Testing so you can focus your time and energy on high-value tasks. With tight integration to Team Foundation Server you will gain in-context collaboration between all team roles, greatly increasing your visibility to the overall project while providing full traceability of user stories and requirements, progress reports, and real-time quality metrics. Test Professional 2010 helps you make informed, timely decisions to drive down the risks associated with your software releases.

## Quality Code Ensured

Make “no-repro” a thing of the past with high quality bugs that developers can fix – the first time and **every** time. Test Professional 2010 lets you to perform exploratory testing and create test cases directly from bugs, effectively strengthening the last line of defense for quality code.

## Simplicity Through Integration

Gain insight and visibility into project status through cross-subject area reporting that captures leading indicators. With an integrated platform and tools, you and your developers no longer have to work in silos using different tools, languages and processes to address the shared task of improving software quality.

## Data-Driven Test Iterations

Easily capture data-driven test iterations on your first pass using Microsoft Test Runner. Use Fast Forward for Manual Testing to quickly navigate to the right places within your test cases to continue verification steps in subsequent passes.

## Creativity Unleashed

Focus your energy on high value tasks by spending less time on repetitive work. Take control of your test artifacts with a rich, modern UI that enables a clean plan-test-track workflow. With powerful test prioritization features and traceability of user stories and requirements, you can finally embrace software change.

The screenshot displays the Microsoft Test Runner interface on the left and the Tailspin Toys website on the right. The test runner shows a test case titled "64: Add Item To Cart" with a list of actions. A tooltip indicates that the action "Change Quantity to @quantity" passed, with the quantity set to 2. The website shows a shopping cart with four items, each priced at \$170.00 and a quantity of 2.

Item	Price	Quantity	Remove	Total
F-22 Raptor Added on 1/26/2016 10:17 am	\$170.00	2	X	\$170.00
Gulf Stream Lear Jet Added on 1/26/2016 10:17 am	\$170.00	2	X	\$170.00
Boeing 747 Added on 1/26/2016 10:17 am	\$170.00	2	X	\$170.00
Messerschmitt Bomber Added on 1/26/2016 10:17 am	\$170.00	2	X	\$170.00

# Top ten benefits

## • Collaborate Effectively across Teams

Work more closely with your development team. Project artifacts are stored in a central repository that facilitates in-context collaboration by reducing waste in hand-off time between tasks. With development and test processes streamlined through integrated tools, you can focus on delivering value over transitioning information between roles.

## • More Test Coverage with Exploratory Testing

Focus your time and energy on discovering complex bugs through exploratory testing. Test Professional 2010 allows you to file exploratory bugs equally rich to those discovered through controlled test plans. Create test cases directly from exploratory bugs with action logs automatically filled in

## • Full Visibility into Your Test Progress

Leverage Microsoft BI tooling like Excel, Reporting Services and Sharepoint for rich, detailed and interactive progress and status reports. Powerful reporting and dashboards provide insight and visibility into overall project health and historical trending. Plus, real-time quality metrics and leading indicators like Bug Find/Fix Rate, Code Coverage and Test Pass Rate provide early warnings of potential problems so you can proactively address them.

## • Rich, Actionable Bugs for Developers

Automatically capture extensible and rich diagnostic information like IntelliTrace<sup>1</sup> logs, indexed videos and screenshots for each new bug. When used with Visual Studio Lab Management 2010, environment snapshots can be attached to bugs enabling developers to connect to the test environment. Now you can effectively reduce the effort consumed in the endless game of “bug Ping-Pong”, making the “no-repro” discussion a thing of the past.

## • Built-In Test Prioritization Tools

With a built-in capability to collect Test Impact data, you can access a list of recommended tests due to code changes and know which bugs are addressed in a given build. Now you can drive the right decision about when to pick up a new build, greatly reducing wasted time and effort.

## • Virtual Lab Management Made Simple

Integrated with Lab Management 2010, Test Professional 2010 helps significantly reduce the cost of setting up, configuring, provisioning and maintaining complex multi-machine test environments. Easily and rapidly provision virtual environments at a known clean state. Lab Management 2010 lets you have more test cycles per machine while ensuring predictable build-deploy-test workflows.

## • Automate Your Repetitive Tasks

Easily capture data-driven test iterations on your first pass using Microsoft Test Runner. Use Fast Forward for Manual Testing to quickly navigate to the right places within your test cases to continue verification steps in subsequent passes. Accelerate your testing cycle further by utilizing share steps throughout your test plan.

## • Take Control of Your Work Items

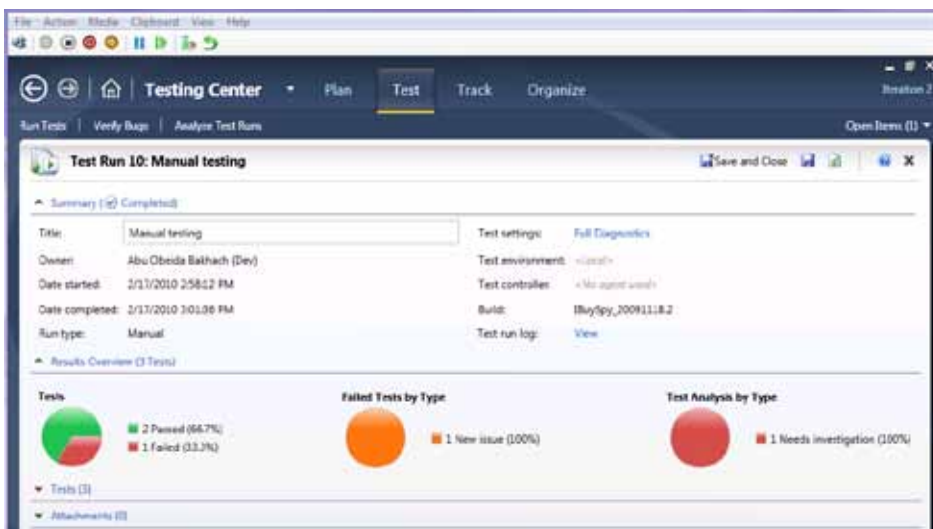
Work in a task-driven manner using Microsoft Test Manager 2010 to maintain your plan-test-track workflow. You can even use Microsoft Excel or a browser to view lists of test cases. Flexible architecture allows customizing and workflow control of bugs, user stories, tasks and requirements to map to your desired processes with options like default values, string pattern matching, dependent pick lists, and rules.

## • End-to-End Traceability

User stories and requirements can be easily accessed through Team Explorer, which lets you trace them from birth through implementation to testing and onto release. Team Explorer also serves as your single launch point for cross-subject area reporting, allowing you to view links from test cases to user stories or requirements.

## • MSDN Subscription Included

MSDN Subscriptions are a convenient way to cost-effectively develop applications on the Microsoft platform with a simple licensing model and broad high quality information resources.



## Full Visibility into Your Test Progress

Test progress is at your fingertips. With Visual Studio Test Professional 2010, a toolset built from the ground up, you can also work in a workflow and task-driven manner while having complete control over your plan-test-track workflow.

<sup>1</sup>IntelliTrace, available with Microsoft Visual Studio 2010 Ultimate, allows you to look back at a past state of your application with debugging information. Events of interest can be recorded through the IDE or Microsoft Visual Studio Test Manager 2010, available with Test Professional 2010 and Visual Studio 2010 Ultimate.

Visual Studio 2010 Feature Comparison	Visual Studio 2010			Visual Studio Test Professional 2010
	Ultimate	Premium	Professional	
<b>Development Platform Support</b>				
Windows, Web and Cloud Development	•	•	•	
Office and SharePoint Development	•	•	•	
<b>Architecture and Modeling</b>				
Architecture Explorer, Layer Diagram and Dependency Validation	•			
Read-only diagrams (UML, Layer, DGML Graphs)	•	•		
<b>Database Development</b>				
Deployment, Change Management, Test Data Generation, Unit Testing	•	•		
<b>Debugging, Diagnostics and Testing</b>				
IntelliTrace™ (Historical Debugging), Web Performance Testing, Load Testing <sup>1</sup>	•			
Static Code Analysis, Code Metrics, Profiling, Code Coverage, Test Impact Analysis, Coded UI Test	•	•		
Unit Testing	•	•	•	
<b>Test and Lab Management</b>				
Microsoft® Test Manager, Test Case Management, Manual Test Execution, Fast Forward for Manual Testing	•			•
Virtual environment setup & tear down, Provision environment from template, Checkpoint environment through Test Manager 2010 (Visual Studio Lab Management 2010 required) <sup>2</sup>	•			•
<b>Team Foundation Server</b>				
Version Control, Work Item Tracking, Build Automation, Team Portal, Reporting & Business Intelligence, Agile Planning Workbook, Team Explorer	•	•	•	•
<b>MSDN Subscription benefits</b>				
Priority support in MSDN Forums, MSDN Magazine, Flash newsletter, Online Concierge	•	•	•	•
Technical support incidents	4	4	2	2
Microsoft® e-learning collections (typically 10 courses or 20 hours)	2	2	1	1
Windows® Azure™ Platform	•†	•†	•†	
<b>MSDN Subscription - Software for Production Use</b>				
Microsoft® Visual Studio® Team Foundation Server 2010 plus one CAL	•	•	•	•
Microsoft® Office Professional Plus 2010, Project Professional 2010, Visio® Premium 2010, Expression Studio 3	•	•		
<b>MSDN Subscription - Software for Development and Test Use<sup>3</sup></b>				
Windows (client and server operating systems), Microsoft® SQL Server®, Toolkits, Software Development Kits, Driver Development Kits	•	•	•	•
Microsoft® Office, Dynamics®, All other Servers, Windows Embedded	•	•		

† Azure benefits vary by subscription level; see the MSDN Subscription site for details: <http://msdn.microsoft.com/subscriptions/> Subject to change and subject to availability.

1. May require one or more Microsoft® Visual Studio® Load Test Virtual User Pack 2010.

2. Microsoft® Visual Studio® Lab Management 2010 is not included with Visual Studio 2010 Ultimate.

3. Per-user license allows unlimited installations and use for designing, developing, testing, and demonstrating applications. UML is a registered trademark of Object Management Group, Inc.

This material is provided for informational purposes only. Microsoft makes no warranties, express or implied.