

## erwin® BP

## At a Glance

erwin® Business Process (BP) software lets you visualize your system interactions, business processes and organizational hierarchies. With these insights from erwin BP as a central source of truth, you can make better decisions – from tweaking a single process to re-engineering the enterprise for total transformation according to your strategic objectives.

## KEY BENEFITS/RESULTS

- Ensure regulatory compliance by documenting regulatory processes, plus streamline controls and audits
- Facilitate enterprise collaboration with integrated business models for a single source of truth but with different views based on specific stakeholder needs
- Improve processes by analyzing existing ones to identify gaps, inefficiencies and redundancies for outcome-driven business changes
- Increase employee education and awareness by ensuring they know where to find established business processes and can apply them to their roles
- Retain institutional knowledge by capturing, documenting and publishing information for key functional areas

**Business Challenges:** Organizations usually know what they should do to get the results they want. But sometimes things get in the way: clunky processes, inefficient teams, lack of information, poor communication. Employees who spend time fighting fires, hunting for data, and reacting to unnecessary roadblocks can't execute on your strategic objectives – and that puts success at risk.

erwin BP provides powerful business process modeling to document existing business processes, design an improved process flow, and build a strategic plan for organizational change. It enables you to implement new processes, eliminating unnecessary or contradictory steps and document the results in a shareable, easy-to-digest format.

**Solution Overview:** Every enterprise has unique DNA formed through a specific combination of people, processes, data, applications and technologies. erwin BP helps align these elements to optimize business operations by giving you the ability to map out your processes to improve how they're managed.

A business process is how you do anything – keep employee records, manufacture a product or launch a new marketing campaign. You likely have formal processes with mandated instructions that you follow each time. You probably also have informal processes, those that allow a team to complete a particular task in its own way. To map your processes, you need to detail all the steps it takes to accomplish them. Once you've gathered this information, you then can map them to business processes.

With a visual roadmap, you'll understand how your organization works today so you can make better decisions tomorrow and reap these benefits:

### Regulatory compliance

- Make sure employees understand what they need to do to comply with regulations
- Provide auditors with documentation that demonstrates your businesses has effective corporate controls in place
- Guard against legal penalties and corporate reputation damage

### Enterprise Collaboration

- Develop integrated business models for a single source of truth but with different views for different stakeholders based on their needs.

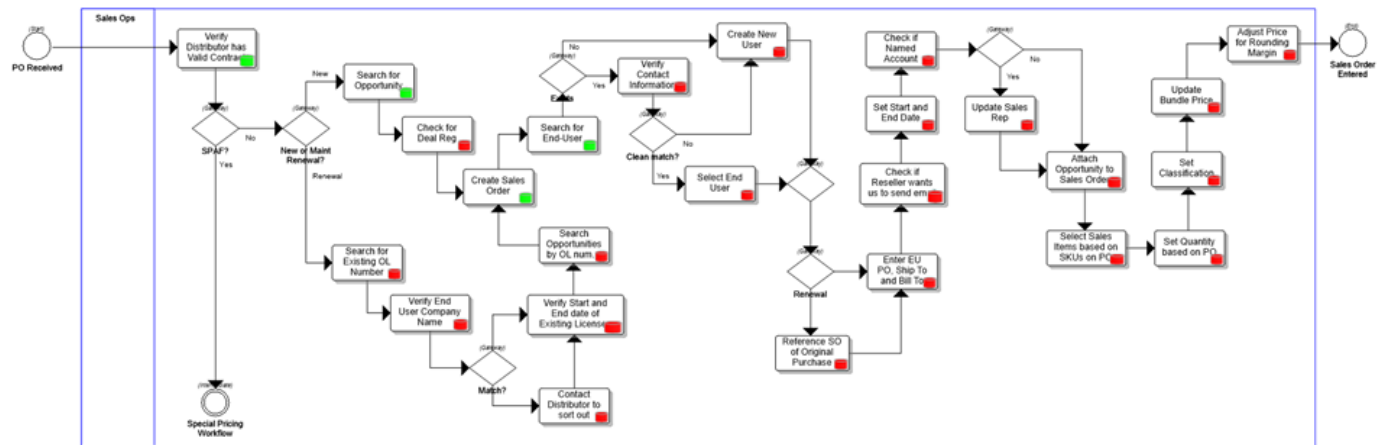
### Process Improvement

- Understands the impact of each process on day-to-day operations and strategic objectives
- Implements meaningful change that delivers significant results

### Employee Education and Awareness

- Clarifies roles and responsibilities
- Increases employee efficiency
- Mitigates risks and eliminates errors caused by unclear processes

erwin BP helps your organization visualize current business realities so new potential can be realized, ensuring results are delivered against business strategies



### Knowledge Retention

- Identifies staff who function as “unofficial data repositories” and where expertise is threatened
- Captures tribal knowledge quickly and effectively
- Transfers key information to the next generation

### Additional Highlights:

Don't know where to start? In addition to our BP software, we also provide consulting services. Our team of professional BP consultants will help you streamline operations and deliver better business results across your business.

### Related Products/Solutions:

- **erwin Data Modeler:** The industry-leading data modeling solution with visual design and documentation capabilities for any data from anywhere across an organization
- **erwin Enterprise Architecture:** A complete set of on-premise enterprise architecture tools that is highly customizable for integration into the customer environment
- **erwin EA Agile:** A full-featured, cloud-based set of enterprise architecture tools using industry frameworks
- **erwin CloudCore:** Combines erwin Data Modeler and erwin Enterprise Architecture Agile in a single, bundled, SaaS solution

**For more information, please visit [www.erwin.com](http://www.erwin.com)**

erwin, Inc. makes the world's No.1 data modeling software, trusted by more than 50,000 data professionals in 60+ countries. Combined with enterprise architecture, business process modeling, data governance and collaboration solutions, erwin provides the industry's only unified data management platform that uses any data from anywhere to drive operational improvements and growth. The erwin Data Management Platform is the foundation of mission-critical data programs in government agencies and leading financial institutions, retailers and healthcare companies around the world.